

Presentations



This page is intentionally left blank

Welcome to the East Area Planning Committee

- **This planning committee meeting is held in public, but it is not a public meeting.**
- **There will be opportunity for the public to address the committee on each application.**
- **If you wish to speak for or against a planning application, you will need to have either requested it in advance, or fill out and hand in one of the available speaker forms.**
- **Information on meeting protocol and conduct at committee is set out in the Code of Practice.**
- **You can find a copy of the Code of Practice in the committee agenda, just before the first planning application report.**



www.oxford.gov.uk





Site layout plan



Building 10.3 from Eastern By-Pass



Building 10.3 from Eastern By-Pass



Rear of Building 10.3



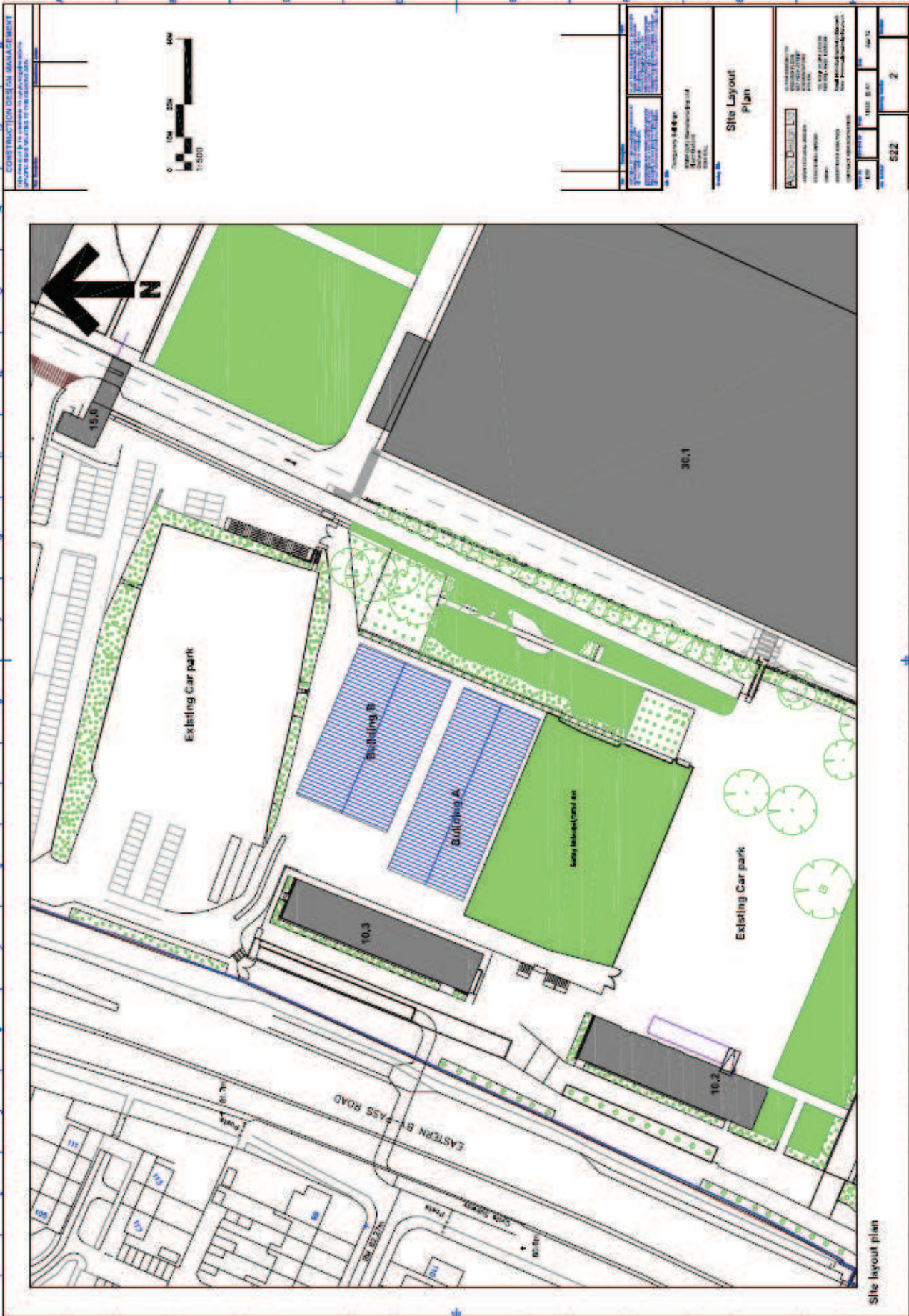
Rear of Building 10.3

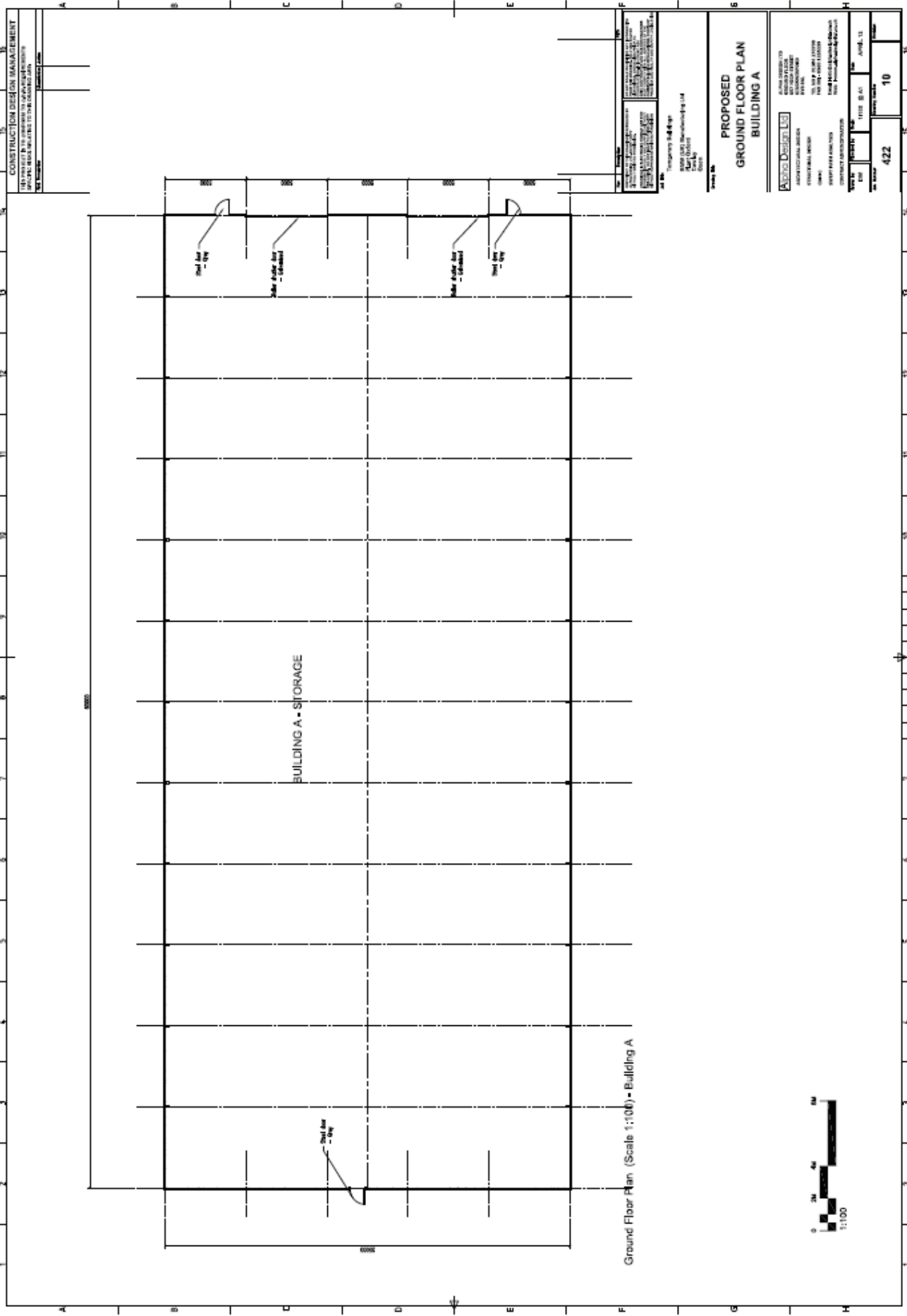


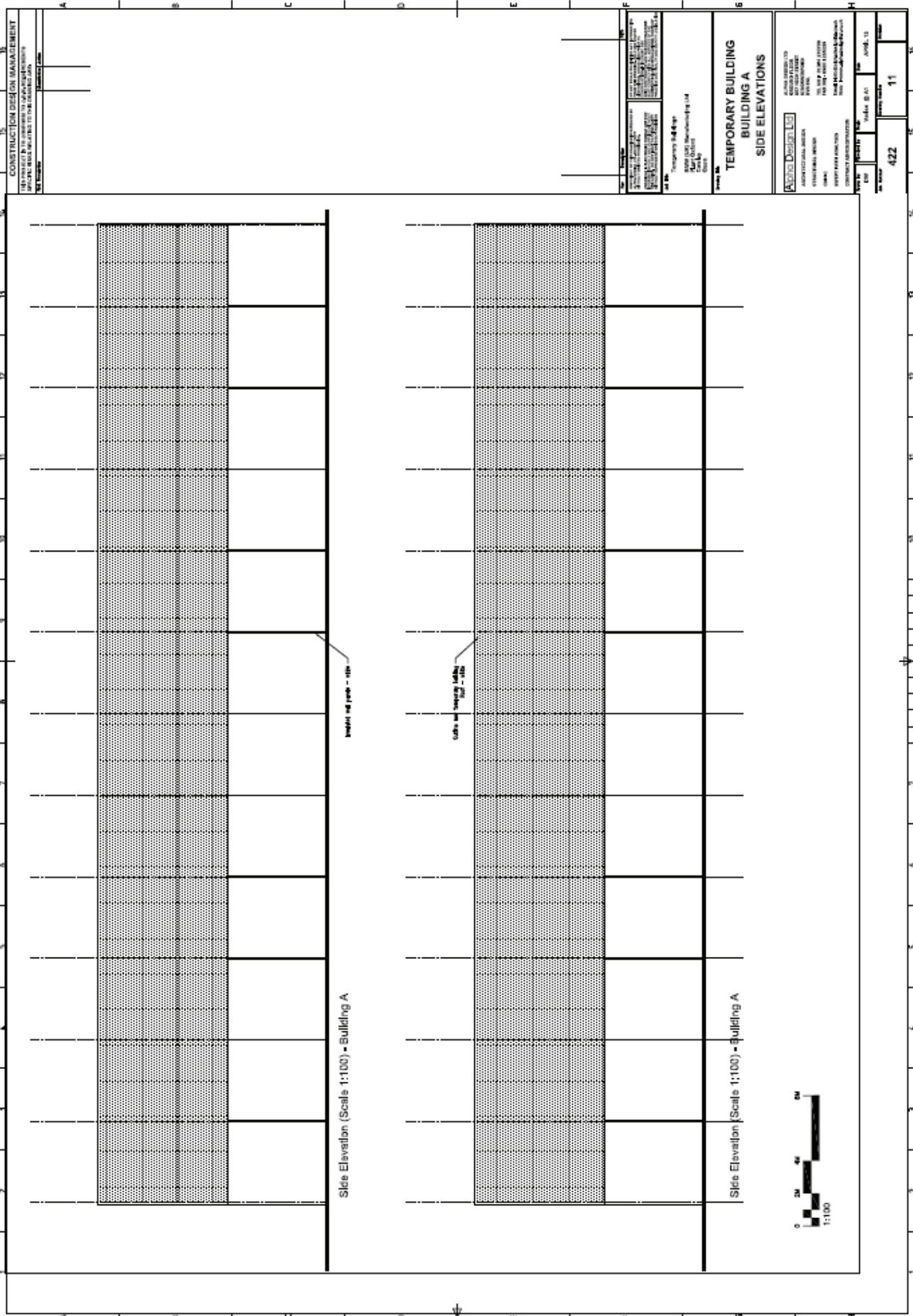
Rear of Building 10.3

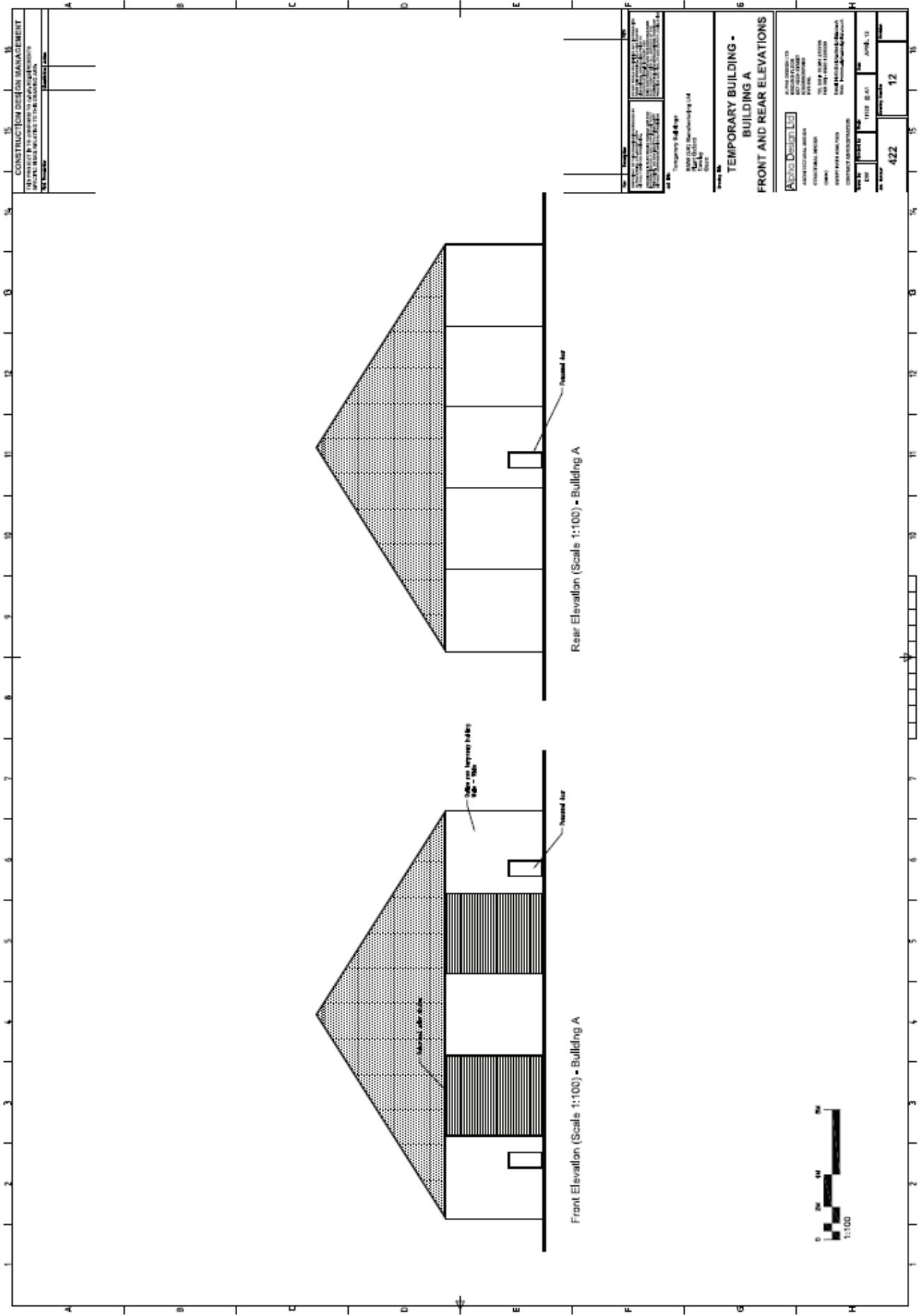


View across car park









CONSTRUCTION DESIGN MANAGEMENT
 150 WILSON BLVD, SUITE 200, WILSON, NJ 07094
 TEL: 908.529.1234
 WWW: WWW.CDMCONSTRUCTION.COM

Temporary Building
 150 WILSON BLVD, SUITE 200, WILSON, NJ 07094
 TEL: 908.529.1234
 WWW: WWW.CDMCONSTRUCTION.COM

**TEMPORARY BUILDING -
 BUILDING A
 FRONT AND REAR ELEVATIONS**

Alpco Design Co.
 150 WILSON BLVD, SUITE 200, WILSON, NJ 07094
 TEL: 908.529.1234
 WWW: WWW.ALPICODESIGN.COM

DATE: 10/12/11
 DRAWING NO: 422
 SHEET NO: 12

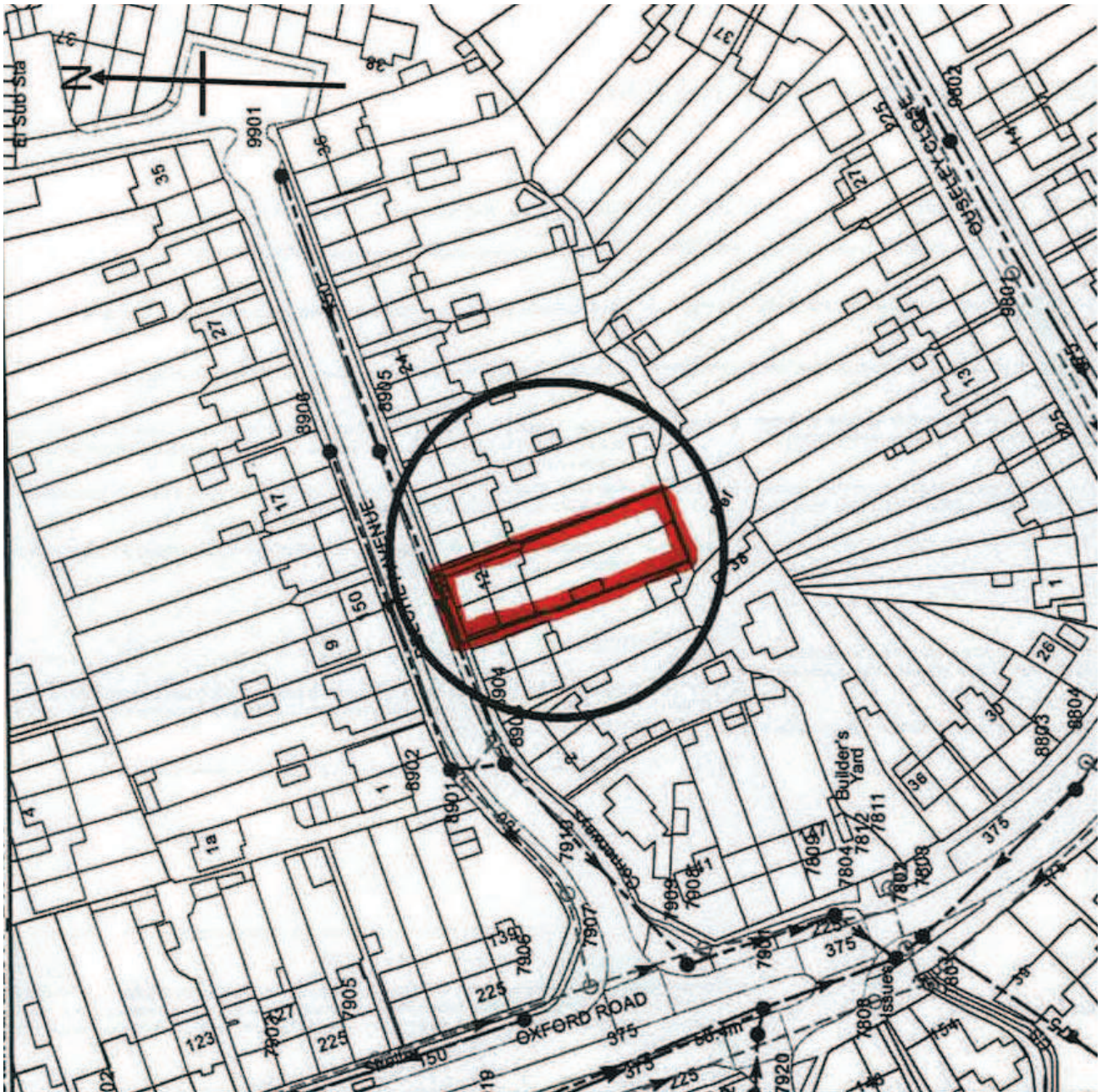
Welcome to the East Area Planning Committee

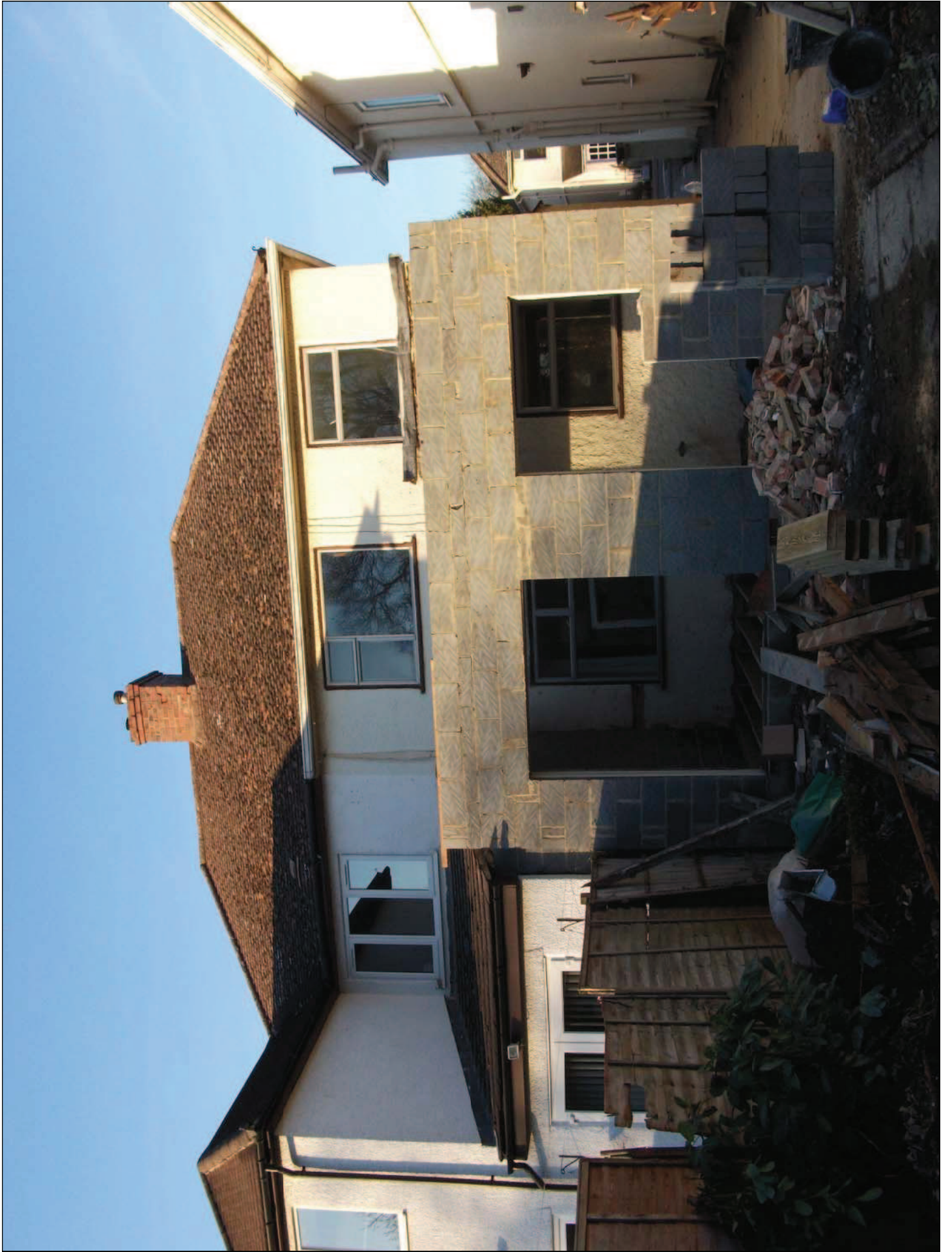
- **This planning committee meeting is held in public, but it is not a public meeting.**
- **There will be opportunity for the public to address the committee on each application.**
- **If you wish to speak for or against a planning application, you will need to have either requested it in advance, or fill out and hand in one of the available speaker forms.**
- **Information on meeting protocol and conduct at committee is set out in the Code of Practice.**
- **You can find a copy of the Code of Practice in the committee agenda, just before the first planning application report.**



www.oxford.gov.uk











Pr
(Sc
Ele
All
dir
po
th



